



ALUSAT NETWORK MAINTENANCE SYSTEM

Overview

Integrasys Alusat is an automated network maintenance system that allows network operators to centrally monitor VSAT terminals post-installation to ensure optimal performance. By allowing for the constant monitoring of terminals, Alusat minimizes the costs of service failures and site re-visits saving significant time and resources.

Alusat allows a virtual visit to every site in the network. Alusat simplifies the overall maintenance process by identifying malfunctioning terminals and in certain conditions, it can even recover out-of-service or service-degraded terminals. The solution enables network operators to focus attention on sites that experience continuous service degradation in order to dismiss spurious outages.

ST Engineering iDirect System Configuration

An ST Engineering iDirect hub system is connected to a Satmotion server, spectrum analyzer, and L-band switch. Alusat is an evolution of the industry-leading Integrasys Satmotion Pocket remote commissioning solution. Therefore, operators with an existing Satmotion system can leverage the same hardware and benefit even more from their investment.

EVOLUTION

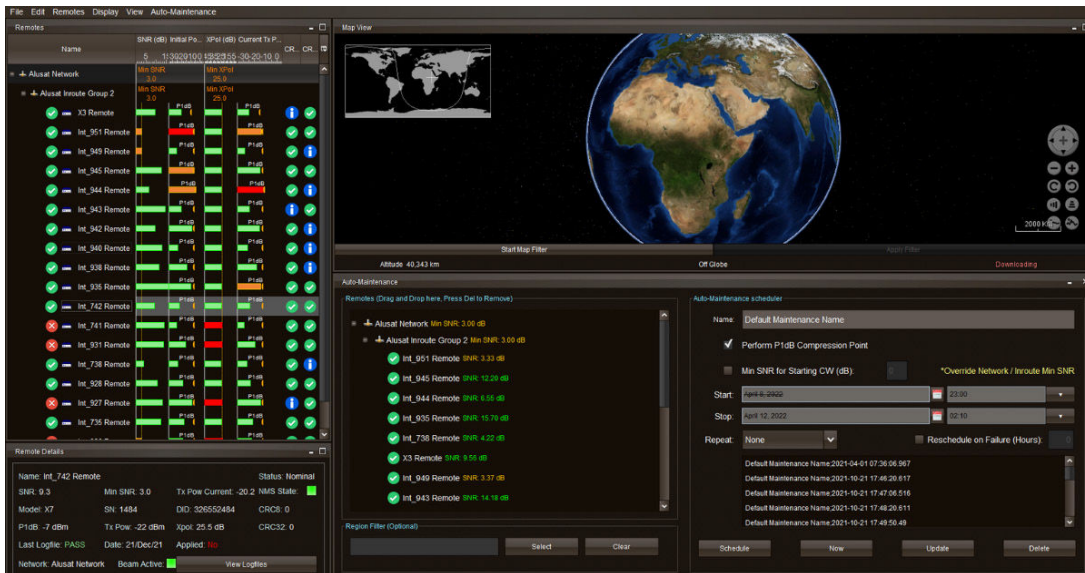


Solution Benefits

- Optimal network performance
- Significant OPEX reduction
- Minimize maintenance time, effort, and intra-satellite interference
- Rapid return on investment
- Simple interface for ease-of-use
- Works in all frequency bands

Features

1. Line up and adjust CW power
2. Graphic representation of the status of each site
3. P1 dB test and power calibration
4. Historic record of evaluations
5. Terminal management and spectrum monitoring
6. Automatically check the health of uplink/downlink of a VSAT network population



How It Works

With Alusat, an operator is able to set the different thresholds for Rx and Tx along with the actions to be automatically taken in different circumstances to rectify any issues. Alusat checks the copol power, cross-polar isolation, adjacent satellite interference, and 1dB compression point of all of the terminals in the targeted VSAT community to detect failures and raise any necessary alarms.

Using the tool in manual mode allows an operator to select a terminal from the list and initiate the calculation of the line up measuring power, compression point, cross-

pol, and ASI. The calculations are reviewed and the status of each terminal is given a pass or fail evaluation and the the operator can determine whether or not to apply the adjustments needed to the selected terminal.

An operator can also automate the network maintenance by selecting the auto-scheduler option. This option has an intuitive drag and drop feature to position a group of terminals by entering the required parameters and selecting when to perform the maintenance.

After completing the maintenance process, an SLA report can be exported to Excel or PDF format. A historical record is kept so an operator can review the status of its terminals and the information in the log files at any time.



For more information, please contact your Sales Representative at sales@idirect.net.