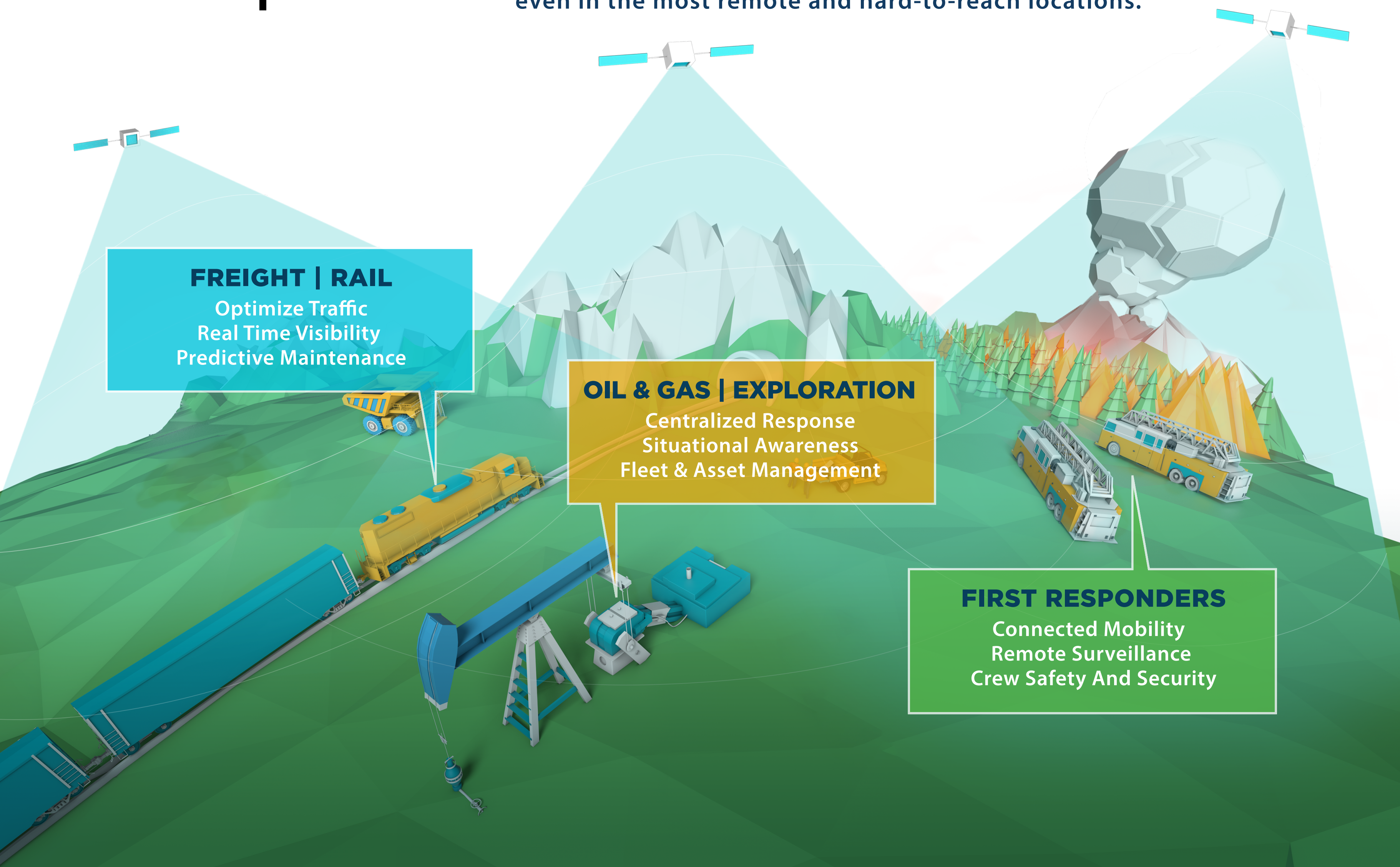


THE POWER OF PARTNERSHIP

Connect a world in constant motion with the first and only high-throughput satellite (HTS) service for land mobility. Intelsat, ST Engineering iDirect and Kymeta are combining the forces of HTS, ground and flat-panel technology to enable ubiquitous, broadband connectivity for mobility applications.

Flex|Move

Intelsat FlexMove provides a breakthrough in speed, reliability and flexibility for communications-on-the-move (COTM) users - even in the most remote and hard-to-reach locations.



FREIGHT | RAIL

Optimize Traffic
Real Time Visibility
Predictive Maintenance

OIL & GAS | EXPLORATION

Centralized Response
Situational Awareness
Fleet & Asset Management

FIRST RESPONDERS

Connected Mobility
Remote Surveillance
Crew Safety And Security



INTELSAT



ST Engineering



KYMETA™

FlexMove delivers unique value through Intelsat's global, high-performing multi-layered satellite network. This fully integrated service dynamically manages capacity and resources while delivering a seamless, reliable user experience.

FlexMove's managed service offering is powered by ST Engineering iDirect's Velocity platform. Velocity's network, modem and management capabilities are designed for HTS scale and advanced mobility.

The Kymeta™ Ku-band terminal makes high-speed communications easier and more reliable than ever by eliminating the need for in-depth technical training on installation, setup, commissioning and service provisioning.

SERVING MOBILITY MARKETS WITH INDUSTRY-LEADING CONNECTIVITY SOLUTIONS

FlexMove is here to help with simple, always-available connectivity for first responders, NGOs and rail customers who remain in constant motion. Crafted by best-in-class technology partners, FlexMove is your new go-to solution for highly reliable, global and resilient connectivity for land mobility. Contact Intelsat, ST Engineering iDirect, or Kymeta for more information.